



Nano-Metre Industrial Limited

ADD.:14F,Zhongyi Building,
No.1040,Caoyang Rd, Shanghai China 200063
TEL: +86-21-52281268
FAX: +86-21-52281233
EMAIL: sales@nmsafety.com
HTTP: www.nmsafety.com



Nano-Metre Industrial Limited

Safety Glove Since 1998



Introduction

Nano-Metre Industrial Limited was established in 1998, which has headquarters in Shanghai and three factories in Jiangxi, Jiangsu and Shandong province.

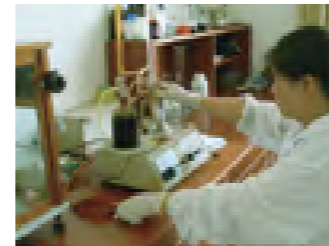
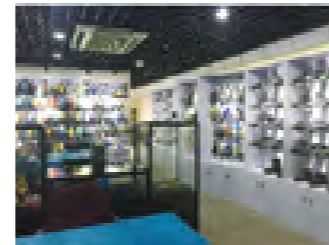
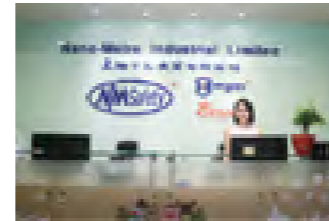
Today Nano-Metre has become one of the leading manufactures in safety field. With more than 600 experienced employees, 15 modern auto-production lines and over 1000 advanced auto-matic knitting machines in the factory, Nano-Metre is capable of developing and producing professional PU dipping gloves, Nitrile dipping gloves, Latex dipping gloves ,PVC gloves and mechanical gloves for customers.

Now our market covers Europe, North America, South America, Australia and Asia.

We have been paying high attention to the quality of our products and service to customers. In order to meet customers' requirements, we have been cooperating with CTC, SATRA and other test labs for more than 10 years and got CE certificates for most of our gloves.

It is really honored to have you as our customers and accompany our successful growth. We will keep making more efforts to supply higher level of products and better service to you.

We sincerely welcome you to visit our Shanghai office and our factories.



EN standards for protective gloves

- CAT I Glove covers the minimal risks when the glove is used for comfort only. If the job presents any kind of danger, the worker has to be equipped with a CAT II or III.
- CAT II Glove have been tested and certified by an independent notified testing company. They comply to mechanical risks, a type test according to EN388, directive 89/686EEC.
- CAT III Glove used in hazardous environments and significant, irreversible risk for serious injury.
- EN 420 Basic requirements for gloves. Here points are glove sizes, PH, chromium (VI) content set or dexterity

EN 407 Protection against heat and fire (for example, welding gloves)

EN 511 Protection against cold
a. resistant to convective cold
b. resistant to contact cold
c. water permeability

EN 388 Mechanical risks

EN 374 Bacteriological contamination

2242 CX

- Impact P, F, X
- Cut (TDM-100Test) A-F
- Puncture 0-4
- Tear 0-4
- Cut (Coup test) 0-5
- Abrasion 0-4

Chemical dangers

Our or your logo



CE mark



EN388 mark



4543 DX

EN388 data

Size: 9

Size number

Art number

Art. NY1350



Cut level 1

Item No: **NY1350AC-HY01**
 Liner: 13 gauge nylon
 Palm: Nitrile, sandy finish, Anti vibration padding
 Back: TPR, Magic Buckle
 Color: Hi-viz yellow & Black
 Size: 7, 8, 9, 10, 11
 Features: Anti vibration, Anti-oil, Anti-impact, Anti-slip
 Application: Oil & Gas, Mining, Automotive, Heavy Equipment Operation



Cut level 1

Item No: **NM010AC-OR03**
 Liner: 10 gauge acrylic
 Palm: Foam Latex
 Back: TPR
 Color: Hi-viz yellow & Orange
 Size: 7, 8, 9, 10, 11
 Features: Anti-impact, Anti-slip, Warm fleece
 Application: Construction, Mining, Automotive, Heavy Equipment Operation



Cut level 1

Item No: **NY1350AC-HY02**
 Liner: 13 gauge nylon
 Palm: Nitrile, sandy finish
 Back: TPR
 Color: Hi-viz yellow & Black
 Size: 7, 8, 9, 10, 11
 Features: Anti-oil, Anti-impact, Anti-slip
 Application: Oil & Gas, Mining, Automotive, Heavy Equipment Operation



Cut level 1

Item No: **NM007AC-GN/OR**
 Liner: 7 gauge acrylic
 Palm: Foam Latex
 Back: TPR
 Color: Green & Orange
 Size: 7, 8, 9, 10, 11
 Features: Anti-impact, Anti-slip, Warm fleece
 Application: Construction, Mining, Automotive, Heavy Equipment Operation



Cut level 1

Item No: **NY1350FRB-AC**
 Liner: 15 gauge nylon & spandex
 Palm: Nitrile, micro foam finish
 Back: TPR
 Color: Grey & Black
 Size: 7, 8, 9, 10, 11
 Features: Breathable palm, Anti-oil, Anti-impact, Anti-slip
 Application: Oil & Gas, Mining, Automotive, Craft



Cut level 1

Item No: **NM10902AC-BLK**
 Liner: 10 gauge polyester
 Palm: Latex, crinkle finish
 Back: TPR, Magic Buckle
 Color: Black
 Size: 7, 8, 9, 10, 11
 Features: Anti-impact, Anti-slip
 Application: Mining, Automotive, Heavy Equipment Operation, Sharp Tool Handling, Abrasive Material Handling



Cut level D

Item No: **DY1350AC-GR/BLK**
 Liner: 13 gauge nylon and fiberglass and HPPE
 Palm: Nitrile, smooth finish
 Back: TPR
 Color: Grey & Black
 Size: 7, 8, 9, 10, 11
 Features: Anti-cut, Anti-impact, Anti-oil, Anti-slip
 Application: Oil & Gas, Mining, Automotive, Heavy Equipment Operation, Sharp Tool Handling, Abrasive Material Handling





Cut level E

Item No: **DY1350AC-H**
 Liner: 13 gauge nylon and glassfiber and HPPE
 Palm: Nitrile, sandy finish, Anti vibration padding
 Back: TPR, Magic Buckle
 Color: Hi-viz yellow & Black
 Size: 7, 8, 9, 10, 11
 Norm: EN 420, EN 388: 4544EP
 Features: Anti vibration, Anti-cut, Anti-impact, Anti-oil, Anti-slip
 Application: Oil & Gas, Mining, Automotive, Heavy Equipment Operation, Sharp Tool Handling, Abrasive Material Handling



EN388:2016

 4544 EP



Cut level D

Item No: **DY1350AC-HY01**
 Liner: 13 gauge nylon and glassfiber and HPPE
 Palm: Foam nitrile
 Back: TPR
 Color: Hi-viz yellow & Black
 Size: 7, 8, 9, 10, 11
 Features: Anti-cut, Anti-impact, Anti-oil, Anti-slip
 Application: Oil & Gas, Mining, Automotive, Heavy Equipment Operation, Sharp Tool Handling, Abrasive Material Handling



Cut level E

Item No: **DY1350AC-OR01**
 Liner: 13 gauge nylon and glassfiber and HPPE
 Palm: Nitrile, sandy finish, Anti vibration padding
 Back: TPR, Magic Buckle
 Color: Orange & Black
 Size: 7, 8, 9, 10, 11
 Features: Anti vibration, Anti-cut, Anti-impact, Anti-slip
 Application: Oil & Gas, Mining, Automotive, Heavy Equipment Operation, Sharp Tool Handling, Abrasive Material Handling



Cut level E

Item No: **DY1350AC-OR02**
 Liner: 13 gauge nylon and glassfiber and HPPE
 Palm: Nitrile, sandy finish
 Back: TPR
 Color: Orange & Black
 Size: 7, 8, 9, 10, 11
 Features: Anti vibration, Anti-cut, Anti-impact, Anti-slip
 Application: Oil & Gas, Mining, Automotive, Heavy Equipment Operation, Sharp Tool Handling, Abrasive Material Handling



Cut level E

Item No: **DY1350AC-OR03**
 Liner: 13 gauge nylon and glassfiber and HPPE
 Palm: Nitrile, sandy finish
 Back: TPR
 Color: Grey & Orange
 Size: 7, 8, 9, 10, 11
 Features: Anti-cut, Anti-impact, Anti-oil, Anti-slip
 Application: Oil & Gas, Mining, Automotive, Heavy Equipment Operation, Sharp Tool Handling, Abrasive Material Handling



Cut level E

Item No: **DY1350AC-R**
 Liner: 13 gauge nylon and glassfiber and HPPE
 Palm: Nitrile, sandy finish, Anti vibration padding
 Back: TPR
 Color: Grey & Red
 Size: 7, 8, 9, 10, 11
 Features: Anti vibration, Anti-cut, Anti-impact, Anti-slip
 Application: Oil & Gas, Mining, Automotive, Heavy Equipment Operation, Sharp Tool Handling, Abrasive Material Handling



Cut level E

Item No: **DY1350DF-AC02**
 Liner: 15 gauge nylon, HPPE, glassfiber + 7 gauge black acrylic
 Palm: Nitrile, micro foam finish
 Back: TPR
 Color: Blue & Black
 Size: 7, 8, 9, 10, 11
 Features: Anti-cut, Anti-impact, Anti-oil, Anti-slip, Warm fleece
 Application: Oil & Gas, Mining, Automotive, Heavy Equipment Operation, Sharp Tool Handling, Abrasive Material Handling



Warm fleece liner



Cut level C

Item No: **DY1350AC-BLK**
 Liner: 13 gauge nylon and glassfiber and HPPE
 Palm: Nitrile on palm, sandy finish
 Back: TPR
 Color: Grey & Black
 Size: 7, 8, 9, 10, 11
 Norm: EN 420, EN 388: 4343
 Features: Anti-cut, Anti-impact, Anti-oil, Anti-slip
 Application: Oil & Gas, Mining, Automotive, Heavy Equipment Operation, Sharp Tool Handling, Abrasive Material Handling



Cut level C

Item No: **DY110-PU-RF**
 Liner: 13 gauge nylon and glassfiber and HPPE
 Palm: PU coating, Anti vibration pad
 Color: Grey
 Size: 7, 8, 9, 10, 11
 Features: Anti vibration, Anti-slip, Anti-cut
 Application: Automotive, Heavy Equipment Operation, Sharp Tool Handling, Abrasive Material Handling



Cut level C

Item No: **DY110-PU-HAC**
 Liner: 13 gauge nylon and glassfiber and HPPE
 Palm: PU, Anti vibration padding
 Back: TPR, Magic Buckle
 Color: Grey
 Size: 7, 8, 9, 10, 11
 Features: Anti vibration, Anti-cut, Anti-impact, Anti-slip
 Application: Automotive, Heavy Equipment Operation, Sharp Tool Handling, Abrasive Material Handling



Cut level D

Item No: **DM1350AC-GR/BLK**
 Liner: 13 gauge nylon and glassfiber and HPPE
 Palm: Latex, crinkle finish, Anti vibration padding
 Back: TPR, Magic Buckle
 Color: Grey & Black
 Size: 7, 8, 9, 10, 11
 Features: Anti vibration, Anti-cut, Anti-impact, Anti-slip
 Application: Mining, Automotive, Heavy Equipment Operation, Sharp Tool Handling, Abrasive Material Handling



Cut level 1

Item No: **MC101**
 Palm: Synthetic leather, EVA padding, Velcro closure
 Back: Stretch spandex fabric, Anti-impact TPR
 Color: Black
 Size: 7, 8, 9, 10, 11
 Features: Dexterity, Sensitivity, Anti vibration, Anti-impact, Anti-slip
 Application: Multipurpose, Maintenance and Repair, Equipment Operation, Automotive, Outdoors



Cut level 1

Item No: **MC102**
 Palm: Synthetic leather
 Back: Stretch spandex fabric, TPR, Velcro closure
 Color: Yellow & Black
 Size: 7, 8, 9, 10, 11
 Features: Dexterity, Sensitivity, Anti-impact, Anti-slip
 Application: Multipurpose, Maintenance and Repair, Equipment Operation, Automotive, Outdoors



Cut level 1

Item No: **MC107**
 Palm: Synthetic leather, Silicon dots
 Back: Stretch-spandex fabric, Anti-impact TPR
 Color: Orange & Grey & Black
 Size: 7, 8, 9, 10, 11
 Features: Dexterity, Sensitivity, Anti-impact, Anti-slip
 Application: Multipurpose, Maintenance and Repair, Equipment Operation, Automotive, Outdoors



Cut level 1

Item No: **SP001**
 Palm: Synthetic leather, Extra padding for better durability
 Back: Stretch spandex fabric, Velcro cuff
 Color: Grey & Black
 Size: 7, 8, 9, 10, 11
 Features: Dexterity, Sensitivity, Finger folding available, Anti-slip
 Application: Multipurpose, Maintenance and Repair, Equipment Operation, Automotive, Outdoors



Cut level 1

Item No: **MC302**
 Palm: Synthetic leather
 Back: Stretch spandex fabric, Velcro closure
 Color: Red & Black
 Size: 7, 8, 9, 10, 11
 Features: Dexterity, Sensitivity, Anti-slip
 Application: Multipurpose, Maintenance and Repair, Equipment Operation, Automotive, Outdoors



Cut level 1

Item No: **SP007**
 Palm: Synthetic leather, Anti-vibration padding
 Back: Stretch spandex fabric, Velcro closure
 Color: Black & Red
 Size: 7, 8, 9, 10, 11
 Features: Dexterity, Sensitivity, Flexible
 Application: Automotive, Bicycle, Outdoor, Sports



Cut level 1

Item No: **MC305**
 Palm: Synthetic leather, Velcro closure,
 Back: Stretch spandex fabric
 Color: Yellow & Black
 Size: 7, 8, 9, 10, 11
 Features: Dexterity, Sensitivity, Good durability
 Application: Multipurpose, Maintenance and Repair, Equipment Operation, Automotive, Outdoors



Cut level B

Item No: **KV007**
 Material: 7 gauge Aramid Fibers knitted glove
 Color: Yellow
 Size: 7, 8, 9, 10, 11
 Features: Anti-cut, Anti-slip
 Application: Mechanic, Automotive assembly, Agriculture, Craft,



Cut level B

Item No: **KV007CS**
 Liner: 7 gauge Aramid Fibers
 Palm: Cow split leather
 Color: Yellow & Grey
 Size: 7, 8, 9, 10, 11
 Features: Anti-cut, Anti-slip
 Application: Mechanic, Automotive assembly, Forest, Agriculture, Craft, Glass handling



Cut level F

Item No.: **DY007CS**
 Liner: 7 gauge strong high cut resistant fiber
 Palm: Cow split leather
 Color: Orange/grey
 Size: 7, 8, 9, 10, 11
 Features: High cut resistant, Anti-slip, High abrasion resistant
 Application: Mechanic, Glass handling, Forest, Construction



DMF Recycle Equipment for PU gloves Protect environment



Cut level 1

Item No: **PU1310-W**
 Liner: 13 gauge nylon
 Coating: PU finger coated
 Color: White
 Size: 6, 7, 8, 9, 10, 11
 Features: Dexterity, Sensitivity
 Application: Electronic assembly, Automotive assembly, Safety inspection



Cut level 1



Item No: **PU1350-W(nylon liner)**
PU1350P-W(polyester liner)
 Liner: 13 gauge nylon or polyester
 Coating: PU palm coated
 Color: White
 Size: 6, 7, 8, 9, 10, 11
 Norm: EN420, EN388:4131X(nylon) or EN388:3121X(polyester)
 Features: Dexterity, Sensitivity
 Application: Electronic assembly, Automotive assembly, Safety inspection



Cut level 1



Item No: **PU1350-DG(nylon liner)**
PU1350P-DG(polyester liner)
 Liner: 13 gauge nylon or polyester
 Coating: PU palm coated
 Color: Grey
 Size: 6, 7, 8, 9, 10, 11
 Norm: EN420, EN388:4131X(nylon) or EN388:3121X(polyester)
 Features: Dexterity, Sensitivity
 Application: Electronic assembly, Automotive assembly, Safety inspection



Cut level 1



Item No: **PU1350-BLK(nylon liner)**
PU1350P-BLK(polyester liner)
 Liner: 13 gauge nylon or polyester
 Coating: PU palm coated
 Color: Black
 Size: 6, 7, 8, 9, 10, 11
 Norm: EN420, EN388:4131X(nylon) or EN388:3121X(polyester)
 Features: Dexterity, Sensitivity
 Application: Electronic assembly, Automotive assembly, Safety inspection





Cut level 1

Item No: **PU1350-NV/BLK(nylon liner)**
PU1350P-NV/BLK(polyester liner)
 Liner: 13 gauge nylon or polyester
 Coating: PU palm coated
 Color: Navy blue & Black
 Size: 6, 7, 8, 9, 10, 11
 Norm: EN420, EN388:4131X(nylon) or EN388:3131X(polyester)
 Features: Dexterity, Sensitivity
 Application: Electronic assembly, Automotive assembly, Safety inspection



Cut level 1

Item No: **PU1350U3-PP**
 Liner: 13 gauge U3 polyester
 Coating: PU palm coated
 Color: Purple & White
 Size: 6, 7, 8, 9, 10, 11
 Features: Dexterity, Sensitivity
 Application: Safety inspection, Gardening, Daily work



Cut level 1

Item No: **PU1350U3-OR**
 Liner: 13 gauge U3 polyester
 Coating: PU palm coated
 Color: Orange & White
 Size: 6, 7, 8, 9, 10, 11
 Features: Dexterity, Sensitivity
 Application: Safety inspection, Gardening, Daily work



Cut level 1

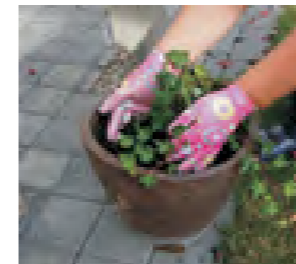
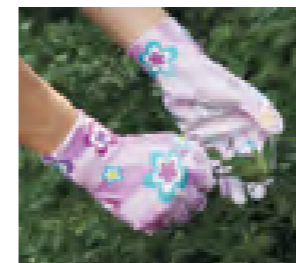
Item No: **PU1350U3-GN**
 Liner: 13 gauge U3 polyester
 Coating: PU palm coated
 Color: Green & White
 Size: 6, 7, 8, 9, 10, 11
 Features: Dexterity, Sensitivity, Touch screen optional
 Application: Safety inspection, Gardening, Daily work



Cut level 1



Item No: **PU1350FP**
 Liner: 13 gauge polyester
 Coating: PU palm coated
 Color: Flower printed
 Size: 6, 7, 8, 9, 10, 11
 Features: Dexterity, Sensitivity
 Application: Safety inspection, Gardening, Daily work



Cut level 1

Item No: **WPU1350-LG**
 Liner: 13 gauge nylon
 Coating: Water based PU palm coated
 Color: Light grey
 Size: 6, 7, 8, 9, 10, 11
 Features: Dexterity, Sensitivity, DMF free
 Application: Electronic assembly, Automotive assembly, Safety inspection



Cut level 1

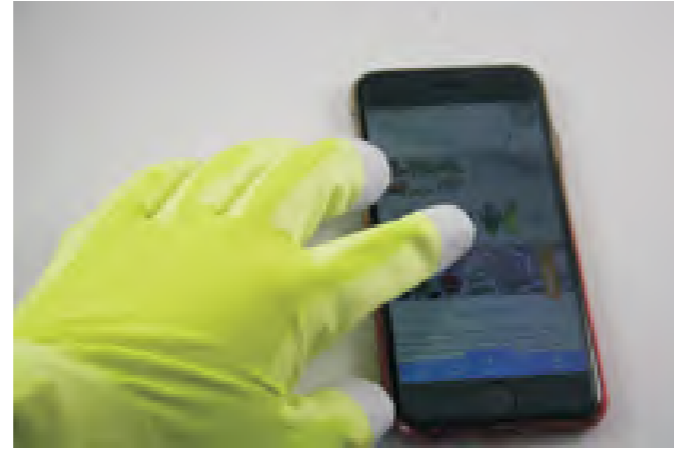
Item No: **PU20.07F**
 Liner: 13 gauge nylon and carbon
 Coating: PU fingertips coated
 Color: Grey & White
 Size: 6, 7, 8, 9, 10, 11
 Features: Dexterity, Sensitivity, Anti-static
 Application: Electronic assembly, Automotive assembly, Safety inspection



Cut level 1

Item No: **PU20.07P**
 Liner: 13 gauge nylon and carbon
 Coating: PU palm coated
 Color: Grey & White
 Size: 6, 7, 8, 9, 10, 11
 Features: Dexterity, Sensitivity, Anti-static
 Application: Electronic assembly, Automotive assembly, Safety inspection





Cut level 1

Item No: **PU1850-NV/BLK**
 Liner: 18 gauge nylon
 Coating: PU palm coated
 Color: Navy blue & Black
 Size: 6, 7, 8, 9, 10, 11
 Norm: EN 420, EN 388: 2110X
 Features: Dexterity, Sensitivity, Super thin, Perfect fit, Touch sreen optional
 Application: Electronic assembly, Automotive assembly, Safety inspection



Cut level 1

Item No: **PU1850T-HG**
 Liner: 18 gauge nylon
 Coating: PU palm coated
 Color: Hi-viz green
 Size: 6, 7, 8, 9, 10, 11
 Features: Dexterity, Sensitivity, Super thin, Perfect fit, Touch sreen
 Application: Electronic assembly, Automotive assembly, Safety inspection



Cut level B

Item No: **DY110PU**
 Liner: 13 gauge nylon and HPPE
 Coating: PU palm coated
 Color: White
 Size: 7, 8, 9, 10, 11
 Norm: EN 420, EN 388: 4X42B
 Features: Anti-cut, Anti-slip
 Application: Mechanic, Automotive assembly, Forest, Argriculture, Craft, Handling sharp parts.



Cut level B

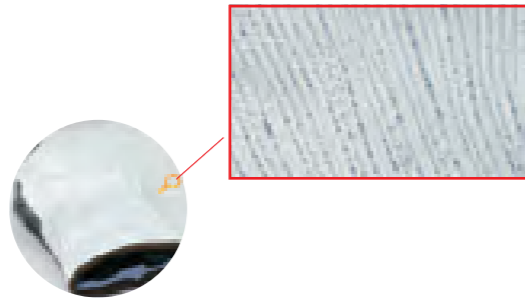
Item No: **DY110DG-PU**
 Liner: 13 gauge nylon and HPPE
 Coating: PU palm coated
 Color: Grey
 Size: 7, 8, 9, 10, 11
 Norm: EN 420, EN 388: 4X42B
 Features: Anti-cut, Anti-slip
 Application: Mechanic, Automotive assembly, Forest, Argriculture, Craft, Handling sharp parts.



Cut level B

Item No: **DY1850PU-H**
 Liner: 18 gauge nylon and glassfiber and HPPE
 Coating: PU palm coated
 Color: Grey
 Size: 7, 8, 9, 10, 11
 Norm: EN 420, EN388:4X41B
 Features: Anti-cut, Anti-slip
 Application: Mechanic, Automotive assembly, Forest, Argriculture, Craft, Handling sharp parts.





Cut level C

Item No: **DY110-PU-HS**
 Liner: 13 gauge nylon and glassfiber and HPPE
 Coating: PU palm coated
 Color: Blue & Black
 Size: 7, 8, 9, 10, 11
 Norm: EN 420, EN 388: 4X42C
 Features: Anti-cut, Anti-slip
 Application: Mechanic, Automotive assembly, Forest, Agriculture, Craft, Handling sharp parts.



Cut level C

Item No: **DY110-PU-H**
 Liner: 13 gauge nylon and glassfiber and HPPE
 Coating: PU palm coated
 Color: Grey & Black
 Size: 7, 8, 9, 10, 11
 Norm: EN 420, EN 388: 4X42C
 Features: Anti-cut, Anti-slip
 Application: Mechanic, Automotive assembly, Forest, Agriculture, Craft, Handling sharp parts.



Cut level D

Item No: **DY110-WPU-H**
 Liner: 13 gauge nylon and glassfiber and HPPE
 Coating: Water based PU palm coated
 Color: Grey & Hi-viz Yellow
 Size: 7, 8, 9, 10, 11
 Norm: EN 420, EN 388: 4X43D
 Features: Anti-cut, Anti-slip
 Application: Mechanic, Automotive assembly, Forest, Agriculture, Craft, Handling sharp parts.



Cut level 1

Item No: **NY1350-LG (nylon liner)**
NY1350P-LG (polyester liner)
 Liner: 13 gauge nylon or polyester
 Coating: Nitrile palm coated
 Color: White & Grey
 Size: 7, 8, 9, 10, 11
 Norm: EN420, EN388:4121X(nylon) or EN388:3121X(polyester)
 Features: Dexterity, Sensitivity, Anti-slip, Anti-oil
 Application: Manufacturing, Oil industries, Automotive assembly, Safety inspection



Cut level 1

Item No: **NY1350-GR (nylon liner)**
NY1350P-GR (polyester liner)
 Liner: 13 gauge nylon or polyester
 Coating: Nitrile palm coated
 Color: Grey
 Size: 7, 8, 9, 10, 11
 Norm: EN420, EN388:4121X(nylon) or EN388:3121X(polyester)
 Features: Dexterity, Sensitivity, Anti-slip, Anti-oil
 Application: Manufacturing, Oil industries, Automotive assembly, Safety inspection



Cut level 1

Item No: **NY1350-BLK (nylon liner)**
NY1350P-BLK (polyester liner)
 Liner: 13 gauge nylon or polyester
 Coating: Nitrile palm coated
 Color: Black
 Size: 7, 8, 9, 10, 11
 Norm: EN420, EN388:4121X(nylon) or EN388:3121X(polyester)
 Features: Dexterity, Sensitivity, Anti-slip, Anti-oil
 Application: Manufacturing, Oil industries, Automotive assembly, Safety inspection



Nitrile Gloves

Nitrile Gloves



Cut level 1

Item No: **NY1350-R/BLK (nylon liner)**
NY1350P-R/BLK (polyester liner)
 Liner: 13 gauge nylon or polyester
 Coating: Nitrile palm coated
 Color: Red & Black
 Size: 7, 8, 9, 10, 11
 Features: Dexterity, Sensitivity, Anti-slip, Anti-oil
 Application: Manufacturing, Oil industries, Automotive assembly, Safety inspection



Cut level 1

Item No: **NY1350U3P-Y/BLK**
 Liner: 13 gauge U3 polyester
 Coating: Nitrile palm coated
 Color: Yellow & Black
 Size: 7, 8, 9, 10, 11
 Features: Dexterity, Sensitivity, Anti-slip, Anti-oil
 Application: Manufacturing, Oil industries, Automotive assembly, Safety inspection



Cut level 1

Item No: **NY1350-LB/GR (nylon liner)**
NY1350P-LB/GR (polyester liner)
 Liner: 13 gauge nylon or polyester
 Coating: Nitrile palm coated
 Color: Light blue & Grey
 Size: 7, 8, 9, 10, 11
 Features: Dexterity, Sensitivity, Anti-slip, Anti-oil
 Application: Manufacturing, Oil industries, Automotive assembly, Safety inspection, Gardening



Cut level 1

Item No: **NY1350U3P-B/BLK**
 Liner: 13 gauge U3 polyester
 Coating: Nitrile palm coated
 Color: Blue & Black
 Size: 7, 8, 9, 10, 11
 Features: Dexterity, Sensitivity, Anti-slip, Anti-oil
 Application: Manufacturing, Oil industries, Automotive assembly, Safety inspection



Cut level 1

Item No: **NY1350-PP/GR (nylon liner)**
NY1350P-PP/GR (polyester liner)
 Liner: 13 gauge nylon or polyester
 Coating: Nitrile palm coated
 Color: Purple & Grey
 Size: 7, 8, 9, 10, 11
 Features: Dexterity, Sensitivity, Anti-slip, Anti-oil
 Application: Manufacturing, Oil industries, Automotive assembly, Safety inspection, Gardening



Cut level 1

Item No: **NY1355-LG (nylon liner)**
NY1355P-LG (polyester liner)
 Liner: 13 gauge nylon or polyester
 Coating: Nitrile half coated
 Color: White & Grey
 Size: 7, 8, 9, 10, 11
 Norm: EN 420, EN 388: 4121X
 Features: Dexterity, Sensitivity, Anti-slip, Anti-oil
 Application: Manufacturing, Oil industries, Automotive assembly, Safety inspection



Cut level 1

Item No: **NY1350FP**
 Liner: 13 gauge polyester
 Coating: Nitrile palm coated
 Color: Flower printed
 Size: 7, 8, 9, 10, 11
 Features: Dexterity, Sensitivity, Anti-slip, Anti-oil
 Application: Manufacturing, Oil industries, Automotive assembly, Safety inspection, Gardening



Cut level 1

Item No: **NY1355-B (nylon liner)**
NY1355P-B (polyester liner)
 Liner: 13 gauge nylon or polyester
 Coating: Nitrile half coated
 Color: White & Blue
 Size: 7, 8, 9, 10, 11
 Features: Dexterity, Sensitivity, Anti-slip, Anti-oil
 Application: Manufacturing, Oil industries, Automotive assembly, Safety inspection





Cut level 1

Item No: **NY1359-LG(nylon liner)**
NY1359P-LG(polyester liner)
 Liner: 13 gauge nylon or polyester
 Coating: Nitrile full coated
 Color: White & Grey
 Size: 7, 8, 9, 10, 11
 Norm: EN 420, EN 388: 4121X
 Features: Dexterity, Sensitivity, Anti-slip, Anti-oil
 Application: Manufacturing, Oil industries, Automotive assembly, Safety inspection



Cut level 1

Item No: **NY1359-SY(nylon liner),**
NY1359P-SR(polyester liner)
 Liner: 13 gauge nylon or polyester
 Coating: Nitrile full coated
 Color: White & Yellow
 Size: 7, 8, 9, 10, 11
 Features: Dexterity, Sensitivity, Anti-slip, Anti-oil
 Application: Manufacturing, Oil industries, Automotive assembly, Safety inspection



Cut level 1

Item No: **NY1850-NV/BLK**
 Liner: 18 gauge nylon
 Coating: Nitrile palm coated
 Color: Navy blue & Black
 Size: 7, 8, 9, 10, 11
 Features: Dexterity, Sensitivity, Anti-slip, Anti-oil, Super thin, Perfect fit
 Application: Manufacturing, Oil industries, Automotive assembly, Safety inspection



Cut level 1

Item No: **NY1859-NV/BLK**
 Liner: 18 gauge nylon
 Coating: Nitrile full coated
 Color: Navy blue
 Size: 7, 8, 9, 10, 11
 Features: Air-free, Dexterity, Sensitivity, Anti-slip, Anti-oil, Super thin, Perfect fit
 Application: Manufacturing, Oil industries, Automotive assembly, Safety inspection



Cut level 1

Item No: **NY1350S-BLK**
 Liner: 13 gauge nylon
 Coating: Sandy nitrile palm coated
 Color: Black
 Size: 7, 8, 9, 10, 11
 Norm: EN 420, EN 388: 4121X
 Features: Dexterity, Sensitivity, Anti-slip, Anti-oil
 Application: Manufacturing, Oil industries, Automotive assembly, Safety inspection

Sandy finish series



Cut level 1

Item No: **NY1350S-OR/BLK**
 Liner: 13 gauge nylon
 Coating: Sandy nitrile palm coated
 Color: Orange & Black
 Size: 7, 8, 9, 10, 11
 Features: Dexterity, Sensitivity, Anti-slip, Anti-oil
 Application: Manufacturing, Oil industries, Automotive assembly, Safety inspection



Cut level 1

Item No: **NY1350S-R/BLK**
 Liner: 13 gauge nylon
 Coating: Sandy nitrile palm coated
 Color: Red & Black
 Size: 7, 8, 9, 10, 11
 Features: Dexterity, Sensitivity, Anti-slip, Anti-oil
 Application: Manufacturing, Oil industries, Automotive assembly, Safety inspection



Cut level 1

Item No: **NY1350S-HY/BLK**
 Liner: 13 gauge nylon
 Coating: Sandy nitrile palm coated
 Color: Hi-viz yellow & black
 Size: 7, 8, 9, 10, 11
 Features: Dexterity, Sensitivity, Anti-slip, Anti-oil
 Application: Manufacturing, Oil industries, Automotive assembly, Safety inspection





Cut level 1

Item No: **NBR1350DS-HY/BLK**
 Liner: 13 gauge nylon & 7 gauge nappy acrylic
 Coating: Sandy nitrile palm coated
 Color: Hi-viz yellow & black
 Size: 7, 8, 9, 10, 11
 Features: Dexterity, Anti-slip, Anti-oil, Winter use
 Application: Manufacturing, Oil industries, Automotive assembly, Light duty work



Cut level 1

Item No: **NBR1355DS-HY/BLK**
 Liner: 13 gauge nylon & 7 gauge nappy acrylic
 Coating: Sandy nitrile half coated
 Color: Hi-viz yellow & black
 Size: 7, 8, 9, 10, 11
 Features: Dexterity, Anti-slip, Anti-oil, Winter use
 Application: Manufacturing, Oil industries, Automotive assembly, Heavy duty work



Cut level 1

Item No: **NBR1355DS-GR/BLK**
 Liner: 13 gauge nylon & 7 gauge nappy acrylic
 Coating: Sandy nitrile half coated
 Color: Grey & Black
 Size: 7, 8, 9, 10, 11
 Features: Dexterity, Anti-slip, Anti-oil, Winter use
 Application: Manufacturing, Oil industries, Automotive assembly, Heavy duty work



Cut level 1

Item No: **NBR1355DS-BLK**
 Liner: 13 gauge nylon & 7 gauge nappy acrylic
 Coating: Sandy nitrile half coated
 Color: Black
 Size: 7, 8, 9, 10, 11
 Features: Dexterity, Anti-slip, Anti-oil, Winter use
 Application: Manufacturing, Oil industries, Automotive assembly, Heavy duty work



Cut level 1

Item No: **NY1350FRB**
 Liner: 15 gauge nylon and spandex
 Coating: High-technology foam nitrile palm coated
 Color: Grey & Black
 Size: 7, 8, 9, 10, 11
 Norm: EN 420, EN 388: 4121X
 Features: Anti-slip, Anti-oil, Flexible, Sensitivity, Water proof optional
 Application: Manufacturing, Oil industries, Automotive assembly, Maintenance



Cut level 1

Item No: **NY1350FP-BLK**
 Liner: 13 gauge nylon
 Coating: Textured High-technology foam nitrile
 Color: Grey & Black
 Size: 7, 8, 9, 10, 11
 Features: Anti-slip, Anti-oil, Flexible, Sensitivity, Breathable
 Application: Manufacturing, Oil industries, Automotive assembly, Maintenance



Cut level 1

Item No: **NY1350FP-GR/BLK**
 Liner: 13 gauge nylon
 Coating: Textured High-technology foam nitrile
 Color: Grey & Black
 Size: 7, 8, 9, 10, 11
 Features: Anti-slip, Anti-oil, Flexible, Sensitivity, Breathable
 Application: Manufacturing, Oil industries, Automotive assembly, Maintenance



Nitrile Gloves



Cut level 1

Item No: **NY1350FD-BLK**
 Liner: 15 gauge nylon and spandex
 Coating: High-technology foam nitrile palm coated with dots
 Color: Grey & Black
 Size: 7, 8, 9, 10, 11
 Norm: EN 420, EN 388: 4121X
 Features: Anti-slip, Anti-oil, Flexible, Sensitivity
 Application: Manufacturing, Oil industries, Automotive assembly, Maintenance



Cut level 1

Item No: **NY1350FDA-OR**
 Liner: 15 gauge nylon and spandex
 Coating: High-technology foam nitrile palm coated with dots
 Color: Orange & Black
 Size: 7, 8, 9, 10, 11
 Norm: EN 420, EN 388: 4121X
 Features: Anti-slip, Anti-oil, Flexible, Sensitivity
 Application: Manufacturing, Oil industries, Automotive assembly, Maintenance



Cut level 1

Item No: **NY1355FD-BLK**
 Liner: 15 gauge nylon and spandex
 Coating: High-technology foam nitrile half coated with dots
 Color: Grey & Black
 Size: 7, 8, 9, 10, 11
 Norm: EN 420, EN 388: 4121X
 Features: Anti-slip, Anti-oil, Flexible, Sensitivity
 Application: Manufacturing, Oil industries, Automotive assembly, Maintenance



Cut level 1

Item No: **NY1359FD**
 Liner: 15 gauge nylon and spandex
 Coating: High-technology foam nitrile full coated with dots
 Color: Grey & Black
 Size: 7, 8, 9, 10, 11
 Norm: EN 420, EN 388: 4121X
 Features: Anti-slip, Anti-oil, Flexible, Sensitivity
 Application: Manufacturing, Oil industries, Automotive assembly, Maintenance



Nitrile Gloves



Cut level 1

Item No: **NY1350FRBL-GR/BLK**
 Liner: 13 gauge nylon and cotton, nappy acrylic
 Coating: High-technology foam nitrile palm coated
 Color: Grey & Black
 Size: 7, 8, 9, 10, 11
 Norm: EN 420, EN 388: 4121X
 Features: Anti-slip, Anti-oil, Flexible, Sensitivity, Winter use
 Application: Manufacturing, Oil industries, Automotive assembly, Maintenance



Cut level 1

Item No: **NY1350FRBL-BR/BLK**
 Liner: 13 gauge nylon and spandex, nappy acrylic
 Coating: High-technology foam nitrile palm coated
 Color: Brown & Black
 Size: 7, 8, 9, 10, 11
 Norm: EN 420, EN 388: 4121X
 Features: Anti-slip, Anti-oil, Flexible, Sensitivity, Winter use
 Application: Manufacturing, Oil industries, Automotive assembly, Maintenance



Cut level 1

Item No: **NY1350FSB-GR**
 Liner: 13 gauge nylon
 Coating: Foam nitrile palm coated
 Color: White & Grey
 Size: 7, 8, 9, 10, 11
 Norm: EN 420, EN 388: 4121X
 Features: Anti-slip, Anti-oil, Flexible, Sensitivity
 Application: Manufacturing, Oil industries, Automotive assembly, Maintenance



Cut level 1

Item No: **NY1350FSB-BLK**
 Liner: 13 gauge nylon
 Coating: Foam nitrile palm coated
 Color: Black
 Size: 7, 8, 9, 10, 11
 Features: Anti-slip, Anti-oil, Flexible, Sensitivity
 Application: Manufacturing, Oil industries, Automotive assembly, Maintenance





Cut level 1

Item No: **BB1350FSB-GN**
 Liner: 13 gauge bamboo fiber
 Coating: Foam nitrile palm coated
 Color: Green
 Size: 7, 8, 9, 10, 11
 Features: Anti-slip, Anti-oil, Flexible, Sensitivity
 Application: Manufacturing, Oil industries, Automotive assembly, Maintenance



Cut level 1

Item No: **NY1350F-GR**
 Liner: 13 gauge nylon
 Coating: Foam nitrile palm coated
 Color: White & Grey
 Size: 7, 8, 9, 10, 11
 Norm: EN 420, EN 388: 4121X
 Features: Anti-slip, Anti-oil, Flexible, Sensitivity
 Application: Manufacturing, Oil industries, Automotive assembly, Maintenance



Cut level 1

Item No: **NY1350FP-GR/BLK**
 Liner: 15 gauge nylon and spandex
 Coating: Foam nitrile palm coated, emboss grip on palm
 Color: Grey & Black
 Size: 7, 8, 9, 10, 11
 Features: Anti-slip, Anti-oil, Flexible, Sensitivity
 Application: Manufacturing, Oil industries, Automotive assembly, Maintenance



Cut level 1

Item No: **NY1355F-GR/GR**
 Liner: 13 gauge nylon
 Coating: Foam nitrile half coated
 Color: Grey
 Size: 7, 8, 9, 10, 11
 Features: Anti-slip, Anti-oil, Flexible, Sensitivity
 Application: Manufacturing, Oil industries, Automotive assembly, Maintenance



Cut level 1

Item No: **NY1359DC-B/BLK**
 Liner: 13 gauge nylon
 Coating: Double coated, smooth nitrile full coated, sandy nitrile on palm
 Color: White & Blue & Black
 Size: 7, 8, 9, 10, 11
 Norm: EN 420, EN 388: 4121X
 Features: Anti-slip, Anti-oil, Flexible, Sensitivity
 Application: Manufacturing, Oil industries, Automotive assembly, Maintenance



Cut level 1

Item No: **NY1355DC-FP**
 Liner: 15 gauge nylon and spandex
 Coating: Foam nitrile double layer half coated, emboss grip on palm
 Color: Blue & Black
 Size: 7, 8, 9, 10, 11
 Features: Anti-slip, Anti-oil, Flexible, Sensitivity
 Application: Manufacturing, Oil industries, Automotive assembly, Maintenance



Cut level 1

Item No: **NY1359DC-FP**
 Liner: 15 gauge nylon and spandex
 Coating: Foam nitrile double layer full coated, emboss grip on palm
 Color: Blue & Black
 Size: 7, 8, 9, 10, 11
 Features: Anti-slip, Anti-oil, Flexible, Sensitivity
 Application: Manufacturing, Oil industries, Automotive assembly, Maintenance





Cut level 1

Item No: **NBR1260-Y**
 Liner: Interlock
 Coating: Nitrile half coated
 Color: Yellow
 Size: 7, 8, 9, 10, 11
 Norm: EN 420, EN 388: 3111X
 Features: Anti-slip, Anti-oil
 Application: Manufacturing, Oil industries, Automotive assembly, Maintenance



Cut level 1

Item No: **NBR1260-B**
 Liner: Interlock
 Coating: Nitrile half coated
 Color: Blue
 Size: 7, 8, 9, 10, 11
 Norm: EN 420, EN 388: 3111X
 Features: Anti-slip, Anti-oil
 Application: Manufacturing, Oil industries, Automotive assembly, Maintenance



Cut level 1

Item No: **NBR1560**
 Liner: Interlock
 Coating: Nitrile full coated
 Color: Blue
 Size: 7, 8, 9, 10, 11
 Norm: EN 420, EN 388: 3111X
 Features: Anti-slip, Anti-oil
 Application: Manufacturing, Oil industries, Automotive assembly, Maintenance



Cut level 1

Item No: **NBR1530-HQ**
 Liner: Jersey, knit wrist
 Coating: Nitrile full coated, three time dipped
 Color: Blue
 Size: 8, 9, 10, 11
 Norm: EN 420, EN 388: 4111X
 Features: Anti-slip, Anti-oil
 Application: Manufacturing, Oil industries, Automotive assembly, Maintenance, Heavy-duty work



Cut level 1

Item No: **NBR4530-HQ**
 Liner: Jersey, safety cuff
 Coating: Nitrile full coated, three time dipped
 Color: Blue
 Size: 8, 9, 10, 11
 Norm: EN 420, EN 388: 4111X
 Features: Anti-slip, Anti-oil
 Application: Manufacturing, Oil industries, Automotive assembly, Maintenance, Heavy-duty work



Cut level 1

Item No: **NBR1230**
 Liner: Jersey, knit wrist
 Coating: Nitrile half coated
 Color: Blue
 Size: 8, 9, 10, 11
 Norm: EN 420, EN 388: 4111X
 Features: Anti-slip, Anti-oil
 Application: Manufacturing, Oil industries, Automotive assembly, Maintenance, Heavy-duty work





Cut level 1

Item No: **NBR1530**
 Liner: Jersey, knit wrist
 Coating: Nitrile full coated
 Color: Blue
 Size: 8, 9, 10, 11
 Norm: EN 420, EN 388: 4111X
 Features: Anti-slip, Anti-oil
 Application: Manufacturing, Oil industries, Automotive assembly, Maintenance, Heavy-duty work



Cut level 1

Item No: **NBR4230**
 Liner: Jersey, safety cuff
 Coating: Nitrile half coated
 Color: Blue
 Size: 8, 9, 10, 11
 Norm: EN 420, EN 388: 4111X
 Features: Anti-slip, Anti-oil
 Application: Manufacturing, Oil industries, Automotive assembly, Maintenance, Heavy-duty work



Cut level 1

Item No: **NBR4530**
 Liner: Jersey, safety cuff
 Coating: Nitrile full coated
 Color: Blue
 Size: 8, 9, 10, 11
 Norm: EN 420, EN 388: 4111X
 Features: Anti-slip, Anti-oil
 Application: Manufacturing, Oil industries, Automotive assembly, Maintenance, Heavy-duty work



Cut level 1

Item No: **NBR4230R**
 Liner: Jersey, safety cuff
 Coating: Nitrile half coated, rough finish
 Color: Blue
 Size: 10
 Features: Anti-slip, Anti-oil
 Application: Manufacturing, Oil industries, Automotive assembly, Maintenance, Heavy-duty work



Cut level 1

Item No: **NBR4530T**
 Liner: Jersey and terry, canvas cuff
 Coating: Nitrile full coated
 Color: Blue
 Size: 10
 Features: Anti-slip, Anti-oil
 Application: Manufacturing, Oil industries, Automotive assembly, Maintenance, Heavy-duty work



Cut level 1

Item No: **NBR4530FC**
 Liner: Jersey, nitrile impregnated safety cuff
 Coating: Nitrile full coated
 Color: Blue
 Size: 10
 Features: Anti-slip, Anti-oil
 Application: Manufacturing, Oil industries, Automotive assembly, Maintenance, Heavy-duty work



Cut level 1

Item No: **NBR4530FC-W**
 Liner: 3 layers (interlock, sponge, jersey), nitrile impregnated safety cuff
 Coating: Nitrile full coated
 Color: Blue
 Size: 11
 Features: Anti-slip, Anti-oil
 Application: Manufacturing, Oil industries, Automotive assembly, Maintenance, Heavy-duty work



Cut level 1

Item No: **NBR7560-OR**
 Liner: Interlock
 Coating: Nitrile full coated, gauntlet
 Color: Orange
 Size: 8, 9, 10, 11
 Length: 27cm, 30cm, 35cm
 Features: Anti-slip, Anti-oil
 Application: Manufacturing, Oil industries, Automotive assembly, Maintenance, Heavy duty work





Cut level 1

Item No: **NBR7560-B**
 Liner: Interlock
 Coating: Nitrile full coated, gauntlet
 Color: Blue
 Size: 8, 9, 10, 11
 Length: 27cm, 30cm, 35cm
 Features: Anti-slip, Anti-oil
 Application: Manufacturing, Oil industries, Automotive assembly, Maintenance, Heavy duty work



Cut level 1

Item No: **NBR7560S-B**
 Liner: Cotton
 Coating: Nitrile full coated, gauntlet, sandy finish on palm
 Color: Blue
 Size: 8, 9, 10, 11
 Length: 26cm, 30cm
 Features: Anti-slip, Flexible, Chemical resistant
 Application: Manufacturing, Chemical industrial, Maintenance, Light duty work



Cut level 1

Item No: **US11205**
 Liner: Flocklined
 Coating: Nitrile full coated, diamond grip on palm
 Color: Green
 Size: 7, 8, 9, 10, 11
 Length: 13 inch
 Thickness: 15mil, 18mil, 20mil available
 Norm: EN 420, EN 388: 3101X
 Features: Anti-slip, Flexible, Chemical resistant
 Application: Manufacturing, Chemical industrial, Maintenance



Cut level 1

Item No: **US11205UL**
 Liner: Unlined
 Coating: Nitrile full coated, diamond grip on palm
 Color: Blue
 Size: 7, 8, 9, 10, 11
 Length: 13 inch
 Thickness: 15mil, 18mil, 20mil available
 Features: Anti-slip, Flexible, Chemical resistant
 Application: Manufacturing, Chemical industrial, Maintenance



Cut level 1

Item No: **US11204**
 Liner: Flocklined
 Coating: Neoprene and latex full coated, diamond grip on palm
 Color: Yellow & Blue
 Size: 7, 8, 9, 10, 11
 Length: 13 inch
 Thickness: 18 mil
 Features: Anti-slip, Flexible, Chemical resistant
 Application: Manufacturing, Chemical industrial, Maintenance



Cut level 1

Item No: **US11209**
 Liner: Flocklined
 Coating: Neoprene full coated, diamond grip on palm
 Color: Black
 Size: 7, 8, 9, 10, 11
 Length: 13 inch
 Thickness: 20 mil
 Features: Anti-slip, Flexible, Chemical resistant
 Application: Manufacturing, Chemical industrial, Maintenance



Cut level 1

Item No: **US11207**
 Discription: Double color latex industrial glove
 Color: Black & Orange
 Size: 7, 8, 9, 10, 11
 Length: 13 inch
 Weight: 90g/pair (other weight is available)
 Features: Anti-slip, Flexible, Chemical resistant
 Application: Manufacturing, Chemical industrial, Maintenance





Cut level B

Item No: **DY1350FRB-BLK**
 Liner: 13 gauge nylon and HPPE
 Coating: High-technology foam nitrile palm coated
 Color: Grey & Black
 Size: 7, 8, 9, 10, 11
 Features: Anti-cut, Anti-slip, Anti-oil
 Application: Mechanic, Automotive assembly, Forest, Craft, Handling sharp parts.



Cut level B

Item No: **DY1350F-GR**
 Liner: 13 gauge nylon and HPPE
 Coating: Foam nitrile palm coated
 Color: White & Grey
 Size: 7, 8, 9, 10, 11
 Features: Anti-cut, Anti-slip, Anti-oil
 Application: Mechanic, Automotive assembly, Forest, Agriculture, Craft, Handling sharp parts.



Cut level B

Item No: **DY1350FP-HY/B**
 Liner: 13 gauge nylon and HPPE
 Coating: Foam nitrile palm coated, emboss grip surface
 Color: Hi-viz green & Blue
 Size: 7, 8, 9, 10, 11
 Features: Anti-cut, Anti-slip, Anti-oil
 Application: Mechanic, Automotive assembly, Forest, Craft, Handling sharp parts.



Cut level B

Item No: **DY1350FRBL-HY/BLK**
 Liner: 13 gauge nylon and HPPE and nappy acrylic
 Coating: High-technology foam nitrile palm coated
 Color: Hi-viz yellow & Black
 Size: 7, 8, 9, 10, 11
 Features: Anti-cut, Anti-slip, Anti-oil, Warm fleece
 Application: Mechanic, Automotive assembly, Forest, Craft, Handling sharp parts.



Cut level C

Item No: **DY1850S-HY/BLK**
 Liner: 18 gauge nylon and glassfiber and HPPE and carbon
 Coating: Sandy nitrile palm coated
 Color: Green & Black
 Size: 7, 8, 9, 10, 11
 Features: Anti-cut, Anti-slip, Anti-static
 Application: Mechanic, Automotive assembly, Safety inspection, Craft, Electronic, Handling sharp parts.



Cut level C

Item No: **DY1850S-B/BLK**
 Liner: 18 gauge nylon and glassfiber and HPPE and carbon
 Coating: Sandy nitrile palm coated
 Color: Blue & Black
 Size: 7, 8, 9, 10, 11
 Features: Anti-cut, Anti-slip, Anti-static
 Application: Mechanic, Automotive assembly, Safety inspection, Craft, Electronic, Handling sharp parts.



Cut level C

Item No: **DY1850S-GR/OR**
 Liner: 18 gauge nylon and glassfiber and HPPE and carbon
 Coating: Sandy nitrile palm coated
 Color: Grey & Orange
 Size: 7, 8, 9, 10, 11
 Features: Anti-cut, Anti-slip, Anti-static
 Application: Mechanic, Automotive assembly, Safety inspection, Craft, Electronic, Handling sharp parts.



Cut level C

Item No: **KV1350U3-BLK**
 Liner: 13 gauge Aramid Fibers and Lycra knitted U3
 Coating: High-technology foam nitrile palm coated
 Color: Yellow & Black
 Size: 7, 8, 9, 10, 11
 Norm: EN 420, EN 388: 4X32B
 Features: Anti-cut, Anti-slip, Heat resistant
 Application: Mechanic, Automotive assembly, Forest, Agriculture, Craft, Handling sharp parts.



Nitrile Gloves



Cut level B

Item No: **KV1350LC-BLK**
 Liner: 13 gauge Aramid Fibers and Lycra
 Coating: High-technology foam nitrile palm coated
 Color: Yellow & Black
 Size: 7, 8, 9, 10, 11
 Norm: EN 420, EN 388: 4X32B
 Features: Anti-cut, Anti-slip, Heat resistant
 Application: Mechanic, Automotive assembly, Forest, Agriculture, Craft, Handling sharp parts.



Cut level C

Item No: **DY1350-H**
 Liner: 13 gauge nylon and glassfiber and HPPE
 Coating: Nitrile palm coated
 Color: Grey & Black
 Size: 7, 8, 9, 10, 11
 Norm: EN 420, EN 388: 4X42C
 Features: Anti-cut, Anti-slip, Anti-oil
 Application: Mechanic, Automotive assembly, Forest, Agriculture, Craft, Handling sharp parts.



Cut level C

Item No: **DY1350S-BLK**
 Liner: 13 gauge nylon and glassfiber and HPPE
 Coating: Sandy nitrile palm coated
 Color: Grey & Black
 Size: 7, 8, 9, 10, 11
 Features: Anti-cut, Anti-slip, Anti-oil
 Application: Mechanic, Automotive assembly, Craft, Electronic, Handling sharp parts.



Cut level C

Item No: **DY1350F-H**
 Liner: 13 gauge nylon and glassfiber and HPPE
 Coating: Sandy nitrile palm coated
 Color: Hi-viz yellow & Black
 Size: 7, 8, 9, 10, 11
 Norm: EN 420, EN 388: 4X42C, ANSI: 4
 Features: Anti-cut, Anti-slip, Anti-oil
 Application: Mechanic, Automotive assembly, Forest, Craft, Handling sharp parts.



Nitrile Gloves



Cut level C

Item No: **DY1310FD-BLK**
 Liner: 13 gauge nylon and glassfiber and HPPE
 Coating: Nitrile coated fingertips and dots on palm
 Color: Grey & Black
 Size: 7, 8, 9, 10, 11
 Features: Anti-cut, Anti-slip, Anti-oil
 Application: Mechanic, Automotive assembly, Forest, Agriculture, Craft, Handling sharp parts.



Cut level C

Item No: **DY1350FD-BLK**
 Liner: 13 gauge nylon and glassfiber and HPPE
 Coating: High-technology foam nitrile with dots on palm
 Color: Grey & Black
 Size: 7, 8, 9, 10, 11
 Features: Anti-cut, Anti-slip, Anti-oil
 Application: Mechanic, Automotive assembly, Forest, Agriculture, Craft, Handling sharp parts.



Reinforcement

Cut level C

Item No: **DY1850FRB** **Super Flex**
 Liner: 18 gauge nylon and glassfiber and HPPE and carbon
 Coating: Micro foam nitrile palm coated
 Color: Green & Black
 Size: 7, 8, 9, 10, 11
 Features: Anti-cut, Anti-slip, Reinforcement on thumb crotch, Anti-oil
 Application: Mechanic, Automotive assembly, Craft, Electronic, Handling sharp parts.



Nitrile Gloves



Cut level C

Item No: **DY1850F-H**
 Liner: 18 gauge nylon and glassfiber and HPPE
 Coating: High-technology foam nitrile palm coated
 Color: Blue & Black
 Size: 7, 8, 9, 10, 11
 Norm: EN 420, EN 388: 4X42C
 Features: Anti-cut, Anti-slip, Anti-oil, reinforce on thumb crotch
 Application: Mechanic, Automotive assembly, Craft, Electronic, Handling sharp parts.



Cut level C

Item No: **DY1355DC-B/BLK**
 Liner: 13 gauge nylon and glassfiber and HPPE
 Coating: Double coated, smooth nitrile half coated, sandy nitrile on palm
 Color: Grey & Blue & Black
 Size: 7, 8, 9, 10, 11
 Features: Anti-cut, Anti-slip, Anti-oil
 Application: Mechanic, Automotive assembly, Forest, Craft, Handling sharp parts.



Cut level C

Item No: **DY1359DC-B/BLK**
 Liner: 13 gauge nylon and glassfiber and HPPE
 Coating: Double coated, smooth nitrile full coated, sandy nitrile on palm
 Color: Grey & Blue & Black
 Size: 7, 8, 9, 10, 11
 Features: Anti-cut, Anti-slip, Anti-oil, Water proof
 Application: Mechanic, Automotive assembly, Forest, Craft, Handling sharp parts.



Cut level C

Item No: **DY1355FD-BLK**
 Liner: 13 gauge nylon and glassfiber and HPPE
 Coating: High-technology foam nitrile half coated, nitrile dots on palm
 Color: Grey & Black
 Size: 7, 8, 9, 10, 11
 Features: Anti-cut, Anti-slip, Anti-oil
 Application: Mechanic, Automotive assembly, Forest, Agriculture, Craft, Handling sharp parts.



Nitrile Gloves



Cut level C

Item No: **DY1355DF-B/BLK**
 Liner: 13 gauge nylon and glassfiber and HPPE and cotton
 Coating: Smooth nitrile half coated for first layer, high-technology foam nitrile for second layer
 Color: Grey & Blue & Black
 Size: 7, 8, 9, 10, 11
 Features: Anti-cut, Anti-slip, Anti-oil, Water proof
 Application: Mechanic, Automotive assembly, Forest, Craft, Handling sharp parts.



Cut level C

Item No: **DY1359DF-B/BLK**
 Liner: 13 gauge nylon and glassfiber and HPPE and cotton
 Coating: Smooth nitrile full coated for first layer, high-technology foam nitrile for second layer
 Color: Grey & Blue & Black
 Size: 7, 8, 9, 10, 11
 Features: Anti-cut, Anti-slip, Anti-oil, Water proof
 Application: Mechanic, Automotive assembly, Forest, Craft, Handling sharp parts.



Cut level C

Item No: **DY1359-B**
 Liner: 13 gauge nylon and glassfiber and HPPE and cotton
 Coating: Smooth nitrile full coated
 Color: Grey & Blue
 Size: 7, 8, 9, 10, 11
 Features: Anti-cut, Anti-slip, Anti-oil, Water proof
 Application: Mechanic, Automotive assembly, Forest, Craft, Handling sharp parts.



Cut level C

Item No: **DY1380-B**
 Liner: 13 gauge nylon and glassfiber and HPPE and cotton
 Coating: Smooth nitrile full coated, gauntlet
 Color: Blue
 Size: 7, 8, 9, 10, 11
 Length: 27cm, 30cm
 Features: Anti-cut, Anti-slip, Anti-oil, Water proof
 Application: Mechanic, Automotive assembly, Forest, Craft, Handling sharp parts.





Cut level 1

Item No: **NM1350-DG/GR(nylon)**
NM1350P-DG(polyester)
 Liner: 13 gauge nylon or polyester
 Coating: Latex crinkle palm coated
 Color: Grey
 Size: 7, 8, 9, 10, 11
 Features: Durability, Dexterity, Sensitivity, Anti-slip
 Application: Manufacturing, Construction, Assembly, Wood industries, Gardening



Cut level 1

Item No: **NM1350-GR/BLK (nylon)**
NM1350P-GR/BLK(polyester)
 Liner: 13 gauge nylon or polyester
 Coating: Latex crinkle palm coated
 Color: Grey & Black
 Size: 7, 8, 9, 10, 11
 Norm: EN 420, EN 388: 3131X
 Features: Durability, Dexterity, Sensitivity, Anti-slip
 Application: Manufacturing, Construction, Assembly, Wood industries, Gardening



EN388
3131X



Cut level 1

Item No: **NM1350P-R/BLK**
 Liner: 13 gauge polyester
 Coating: Latex crinkle palm coated
 Color: Red & Black
 Size: 7, 8, 9, 10, 11
 Norm: EN 420, EN 388: 2121X
 Features: Durability, Dexterity, Sensitivity, Anti-slip
 Application: Manufacturing, Construction, Assembly, Wood industries, Gardening



EN388
2121X

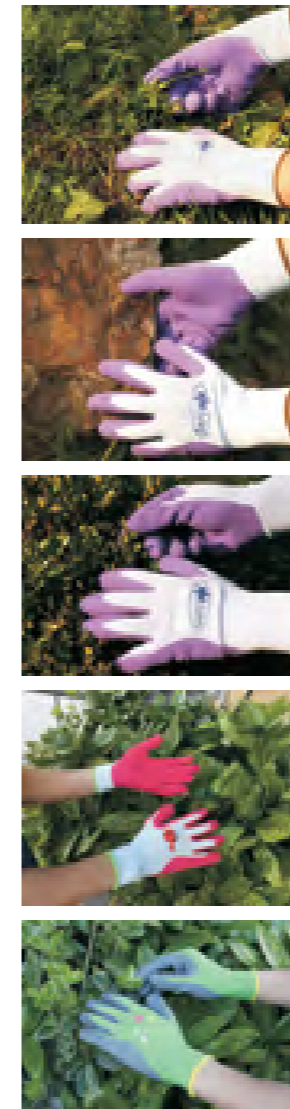


Cut level 1

Item No: **NM1350L-GR/BLK**
 Liner: 13 gauge nylon and acrylic
 Coating: Latex crinkle palm coated
 Color: Grey & Black
 Size: 7, 8, 9, 10, 11
 Features: Durability, Dexterity, Sensitivity, Anti-slip, Winter use
 Application: Manufacturing, Construction, Assembly, Wood industries, Gardening



Application



Cut level 1

Item No: **NM1350F-LG/PP**
 Liner: 13 gauge nylon
 Coating: Foam latex palm coated
 Color: Grey & Purple
 Size: 7, 8, 9, 10, 11
 Features: Durability, Dexterity, Sensitivity, Anti-slip
 Application: Manufacturing, Construction, Assembly, Wood industries, Gardening



Cut level 1

Item No: **NM1350F-OR/BLK**
 Liner: 13 gauge nylon
 Coating: Foam latex palm coated
 Color: Orange & Black
 Size: 7, 8, 9, 10, 11
 Features: Durability, Dexterity, Sensitivity, Anti-slip
 Application: Manufacturing, Construction, Assembly, Wood industries, Gardening



Cut level 1

Item No: **NM1350F-HY/BLK**
 Liner: 13 gauge nylon
 Coating: Foam latex palm coated
 Color: Hi-viz yellow & Black
 Size: 7, 8, 9, 10, 11
 Norm: EN 420, EN 388: 2131X
 Features: Durability, Dexterity, Sensitivity, Anti-slip
 Application: Manufacturing, Construction, Assembly, Wood industries, Gardening



EN388
2131X





Cut level 1

Item No: **NM1350F-GR/GN**
 Liner: 13 gauge nylon
 Coating: Foam latex palm coated
 Color: Grey & Green
 Size: 7, 8, 9, 10, 11
 Features: Durability, Dexterity, Sensitivity, Anti-slip
 Application: Manufacturing, Construction, Assembly, Wood industries, Gardening



Cut level 1

Item No: **NM1350F-BLK/PP**
 Liner: 13 gauge nylon
 Coating: Foam latex palm coated
 Color: Black & Purple
 Size: 7, 8, 9, 10, 11
 Features: Durability, Dexterity, Sensitivity, Anti-slip
 Application: Manufacturing, Construction, Assembly, Wood industries, Gardening



Cut level 1

Item No: **BB1350F-GN**
 Liner: 13 gauge bamboo
 Coating: Foam latex palm coated
 Color: Green
 Size: 7, 8, 9, 10, 11
 Features: Durability, Dexterity, Sensitivity, Anti-slip
 Application: Manufacturing, Construction, Assembly, Wood industries, Gardening



Cut level 1

Item No: **NM1355F-CL**
 Liner: 13 gauge nylon
 Coating: Foam latex 3/4 coated, with 4 claws
 Color: Green & Black
 Size: 7, 8, 9, 10, 11
 Features: Dexterity, Sensitivity, 4 claws for digging & planting
 Application: Gardening



Cut level 1

Item No: **NM1350S-R/GN**
 Liner: 13 gauge nylon
 Coating: Latex sandy finish palm coated
 Color: Red & Green
 Size: 7, 8, 9, 10, 11
 Norm: EN 420, EN 388: 2131X
 Features: Durability, Dexterity, Sensitivity, Anti-slip
 Application: Manufacturing, Construction, Assembly, Wood industries, Gardening



Cut level 1

Item No: **NM1350S-HY/BLK**
 Liner: 13 gauge nylon
 Coating: Double layer latex coated, sandy finish on palm
 Color: Hi-viz yellow & Black
 Size: 7, 8, 9, 10, 11
 Norm: EN 420, EN 388: 2131X
 Features: Durability, Dexterity, Sensitivity, Anti-slip, Water proof
 Application: Manufacturing, Construction, Assembly, Wood industries, Gardening



Cut level 1

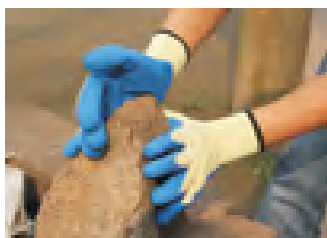
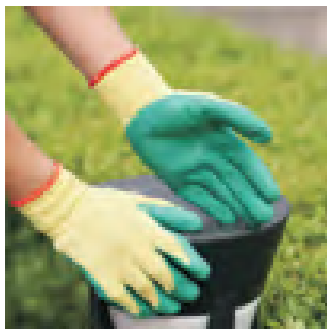
Item No: **NM10902-Y/OR**
 Liner: 10 gauge polycotton
 Coating: Latex crinkle palm coated
 Color: Yellow & Orange
 Size: 7, 8, 9, 10, 11
 Norm: EN 420, EN 388: 2142X
 Features: Durability, Dexterity, Anti-slip
 Application: Manufacturing, Construction, Assembly, Wood industries, Gardening



Cut level 1

Item No: **NM10902-GR/B**
 Liner: 10 gauge polycotton
 Coating: Latex crinkle palm coated
 Color: Grey & Blue
 Size: 7, 8, 9, 10, 11
 Norm: EN 420, EN 388: 2142X
 Features: Durability, Dexterity, Anti-slip
 Application: Manufacturing, Construction, Assembly, Wood industries, Gardening





Cut level 1

Item No: **NM10902-Y/B**
 Liner: 10 gauge polycotton
 Coating: Latex crinkle palm coated
 Color: Yellow & Blue
 Size: 7, 8, 9, 10, 11
 Norm: EN 420, EN 388: 2142X
 Features: Durability, Dexterity, Anti-slip
 Application: Manufacturing, Construction, Assembly, Wood industries, Gardening



Cut level 1

Item No: **NM10902-GR/GR**
 Liner: 10 gauge polycotton
 Coating: Latex crinkle palm coated
 Color: Grey
 Size: 7, 8, 9, 10, 11
 Features: Durability, Dexterity, Anti-slip
 Application: Manufacturing, Construction, Assembly, Wood industries, Gardening



Cut level 1

Item No: **NM10902-HY/BLK**
 Liner: 10 gauge polycotton
 Coating: Latex crinkle palm coated
 Color: Hi-viz-yellow & Black
 Size: 7, 8, 9, 10, 11
 Features: Durability, Dexterity, Anti-slip
 Application: Manufacturing, Construction, Assembly, Wood industries, Gardening



Cut level 1

Item No: **NM10902-BLK**
 Liner: 10 gauge polycotton
 Coating: Latex crinkle palm coated
 Color: Black
 Size: 7, 8, 9, 10, 11
 Norm: EN 420, EN 388: 2142X
 Features: Durability, Dexterity, Anti-slip
 Application: Manufacturing, Construction, Assembly, Wood industries, Gardening



Cut level 1

Item No: **NM10902M-GR/B**
 Liner: 10 gauge polycotton, buckle on wrist
 Coating: Latex crinkle palm coated
 Color: Grey & Blue
 Size: 7, 8, 9, 10, 11
 Features: Durability, Dexterity, Anti-slip
 Application: Manufacturing, Construction, Assembly, Wood industries, Gardening



Cut level 1

Item No: **NM10902T-Y/GN**
 Liner: 10 gauge polycotton
 Coating: Latex crinkle palm and thumb coated
 Color: Yellow & Green
 Size: 7, 8, 9, 10, 11
 Features: Durability, Dexterity, Anti-slip
 Application: Manufacturing, Construction, Assembly, Wood industries, Gardening



Cut level 1

Item No: **NM10920-GR/B**
 Liner: 10 gauge polycotton
 Coating: Latex crinkle half coated
 Color: Grey & Blue
 Size: 7, 8, 9, 10, 11
 Features: Durability, Dexterity, Anti-slip
 Application: Manufacturing, Construction, Assembly, Wood industries, Gardening



Cut level 1

Item No: **NM10902F-GR/BLK**
 Liner: 10 gauge polycotton
 Coating: Foam latex palm coated
 Color: Grey & Black
 Size: 7, 8, 9, 10, 11
 Features: Durability, Dexterity, Anti-slip
 Application: Manufacturing, Construction, Assembly, Wood industries, Gardening





Cut level 1

Item No: **NM10902ES-GR/BLK**
 Liner: 10 gauge polycotton, Economic style
 Coating: Smooth latex palm coated
 Color: Grey & Black
 Size: 7, 8, 9, 10, 11
 Features: Durability, Dexterity, Anti-slip
 Application: Manufacturing, Construction, Assembly, Wood industries, Gardening



Cut level 1

Item No: **NM10902E-GR/B**
 Liner: 10 gauge polycotton, Economic style
 Coating: Latex crinkle palm coated
 Color: Grey & Blue
 Size: 7, 8, 9, 10, 11
 Features: Durability, Dexterity, Anti-slip
 Application: Manufacturing, Construction, Assembly, Wood industries, Gardening



Cut level 1

Item No: **NM10902E-GR/GR**
 Liner: 10 gauge polycotton, Economic style
 Coating: Latex crinkle palm coated
 Color: Grey
 Size: 7, 8, 9, 10, 11
 Features: Durability, Dexterity, Anti-slip
 Application: Manufacturing, Construction, Assembly, Wood industries, Gardening



Cut level 1

Item No: **NM10902E-GR/BLK**
 Liner: 10 gauge polycotton, Economic style
 Coating: Latex crinkle palm coated
 Color: Grey & Black
 Size: 7, 8, 9, 10, 11
 Norm: EN 420, EN 388: 2142X
 Features: Durability, Dexterity, Anti-slip
 Application: Manufacturing, Construction, Assembly, Wood industries, Gardening



Cut level 1

Item No: **NM10902E-Y/OR**
 Liner: 10 gauge polycotton, Economic style
 Coating: Latex crinkle palm coated
 Color: Yellow & Orange
 Size: 7, 8, 9, 10, 11
 Norm: EN 420, EN 388: 2142X
 Features: Durability, Dexterity, Anti-slip
 Application: Manufacturing, Construction, Assembly, Wood industries, Gardening



Cut level 1

Item No: **NM10902E-Y/GN**
 Liner: 10 gauge polycotton, Economic style
 Coating: Latex crinkle palm coated
 Color: Yellow & Green
 Size: 7, 8, 9, 10, 11
 Features: Durability, Dexterity, Anti-slip
 Application: Manufacturing, Construction, Assembly, Wood industries, Gardening



Cut level 1

Item No: **NM1010E-R**
 Liner: 10 gauge natural polycotton, Economic style
 Coating: Latex palm coated
 Color: White & Red
 Size: 7, 8, 9, 10, 11
 Features: Durability, Dexterity, Anti-slip
 Application: Manufacturing, Construction, Assembly, Wood industries, Gardening



Cut level 1

Item No: **NM1010-B**
 Liner: 10 gauge natural polycotton
 Coating: Latex palm coated
 Color: White & Blue
 Size: 7, 8, 9, 10, 11
 Features: Durability, Dexterity, Anti-slip
 Application: Manufacturing, Construction, Assembly, Wood industries, Gardening





Cut level 1

Item No: **NM10930-HY/BLK**
 Liner: 10 gauge acrylic nappy inside
 Coating: Latex crinkle palm coated
 Color: Hi-viz yellow & Black
 Size: 7, 8, 9, 10, 11
 Features: Durability, Dexterity, Anti-slip, Winter use
 Application: Manufacturing, Construction, Assembly, Wood industries, Gardening



Cut level 1

Item No: **NM10930-DR/BLK**
 Liner: 10 gauge acrylic nappy inside
 Coating: Latex crinkle palm coated
 Color: Red & Black
 Size: 7, 8, 9, 10, 11
 Features: Durability, Dexterity, Anti-slip, Winter use
 Application: Manufacturing, Construction, Assembly, Wood industries, Gardening



Cut level 1

Item No: **NM10930-GR/BLK**
 Liner: 10 gauge acrylic nappy inside
 Coating: Latex crinkle palm coated
 Color: Grey & Black
 Size: 7, 8, 9, 10, 11
 Features: Durability, Dexterity, Anti-slip, Winter use
 Application: Manufacturing, Construction, Assembly, Wood industries, Gardening



Cut level 1

Item No: **NM10930F-OR/BLK**
 Liner: 10 gauge acrylic nappy inside
 Coating: Foam latex palm coated
 Color: Orange & Black
 Size: 7, 8, 9, 10, 11
 Features: Durability, Dexterity, Anti-slip, Winter use
 Application: Manufacturing, Construction, Assembly, Wood industries, Gardening



Cut level 1

Item No: **NM007E-OR/BLK**
 Liner: 7 gauge nappy polyester, Economic style
 Coating: Latex crinkle palm coated
 Color: Orange & Black
 Size: 7, 8, 9, 10, 11
 Features: Durability, Dexterity, Anti-slip, Winter use
 Application: Manufacturing, Construction, Assembly, Wood industries, Gardening



Cut level 1

Item No: **NM007-OR/BLK**
 Liner: 7 gauge acrylic
 Coating: Latex crinkle palm and thumb coated
 Color: Orange & Black
 Size: 7, 8, 9, 10, 11
 Features: Durability, Dexterity, Anti-slip, Winter use
 Application: Manufacturing, Construction, Assembly, Wood industries, Gardening



Cut level 1

Item No: **NM007-OR/B**
 Liner: 7 gauge acrylic
 Coating: Latex crinkle palm and thumb coated
 Color: Orange & Blue
 Size: 7, 8, 9, 10, 11
 Norm: EN 420, EN 388: 1231, EN 511
 Features: Durability, Dexterity, Anti-slip, Winter use
 Application: Manufacturing, Construction, Assembly, Wood industries, Gardening



Cut level 1

Item No: **NM007M-HY/B**
 Liner: 7 gauge acrylic, buckle on wrist
 Coating: Latex crinkle palm and thumb coated
 Color: Hi-viz yellow & Blue
 Size: 7, 8, 9, 10, 11
 Features: Durability, Dexterity, Anti-slip, Winter use
 Application: Manufacturing, Construction, Assembly, Wood industries, Gardening





Cut level 1

Item No: **NM007F-HY/BLK**
 Liner: 7 gauge acrylic nappy inside
 Coating: Foam latex palm coated
 Color: Hi-viz yellow & Black
 Size: 7, 8, 9, 10, 11
 Features: Durability, Dexterity, Anti-slip, Winter use
 Application: Manufacturing, Construction, Assembly, Wood industries, Gardening



Cut level 2

Item No: **NM1355DF-BLK**
 Liner: 13 gauge nylon and 7 gauge nappy acrylic
 Coating: Foam latex half coated
 Color: Black
 Size: 7, 8, 9, 10, 11
 Norm: EN 420, EN 388: 2241X
 Features: Durability, Dexterity, Anti-slip, Winter use
 Application: Manufacturing, Construction, Assembly, Wood industries, Gardening



Cut level 1

Item No: **NM007F-B/BLK**
 Liner: 7 gauge acrylic nappy inside
 Coating: Foam latex palm coated
 Color: Blue & Black
 Size: 7, 8, 9, 10, 11
 Features: Durability, Dexterity, Anti-slip, Winter use
 Application: Manufacturing, Construction, Assembly, Wood industries, Gardening



Cut level 2

Item No: **NM1355DF-R/BLK**
 Liner: 13 gauge nylon and 7 gauge nappy acrylic
 Coating: Foam latex half coated
 Color: Red & Black
 Size: 7, 8, 9, 10, 11
 Features: Durability, Dexterity, Anti-slip, Winter use
 Application: Manufacturing, Construction, Assembly, Wood industries, Gardening



Cut level 1

Item No: **NM0075-HY/B**
 Liner: 7 gauge acrylic nappy inside
 Coating: Latex crinkle half coated
 Color: Hi-viz yellow & Blue
 Size: 7, 8, 9, 10, 11
 Features: Durability, Dexterity, Anti-slip, Winter use
 Application: Manufacturing, Construction, Assembly, Wood industries, Gardening



Cut level 2

Item No: **NM1359DC-R/BLK**
 Liner: 13 gauge nylon and 7 gauge nappy acrylic
 Coating: Smooth latex for first layer, foam latex for second layer
 Color: Orange & Black
 Size: 7, 8, 9, 10, 11
 Features: Durability, Dexterity, Anti-slip, Winter use
 Application: Manufacturing, Construction, Assembly, Wood industries, Gardening





Cut level 1

Item No: **RB1260-W/GN**
 Liner: Cotton interlock
 Coating: Latex crinkle half coated, knit wrist
 Color: White & Green
 Size: 10
 Features: Durability, Anti-slip, Winter use
 Application: Manufacturing, Construction, Assembly, Wood industries



Cut level 1

Item No: **RB1230**
 Liner: Jersey
 Coating: Latex crinkle half coated, knit wrist
 Color: White & Yellow
 Size: 10
 Features: Durability, Anti-slip, Winter use
 Application: Manufacturing, Construction, Assembly, Wood industries, Heavy duty work



Cut level 1

Item No: **RB1530**
 Liner: Jersey
 Coating: Latex crinkle full coated, knit wrist
 Color: White & Yellow
 Size: 10
 Features: Durability, Anti-slip, Winter use
 Application: Manufacturing, Construction, Assembly, Wood industries, Heavy duty work



Cut level 1

Item No: **RB4230**
 Liner: Jersey
 Coating: Latex crinkle half coated, safety cuff
 Color: White & Yellow
 Size: 10
 Features: Durability, Anti-slip, Winter use
 Application: Manufacturing, Construction, Assembly, Wood industries, Heavy duty work



Cut level 1

Item No: **RB4530**
 Liner: Jersey
 Coating: Latex crinkle full coated, safety cuff
 Color: White & Yellow
 Size: 10
 Features: Durability, Anti-slip, Winter use
 Application: Manufacturing, Construction, Assembly, Wood industries, Heavy duty work



Cut level 1

Item No: **RB7530-Y**
 Liner: Jersey
 Coating: Latex crinkle full coated, gauntlet
 Color: Yellow
 Size: 10
 Length: 27cm, 30cm, 35cm
 Features: Durability, Anti-slip, Winter use
 Application: Manufacturing, Construction, Assembly, Wood industries, Heavy duty work



Cut level 1

Item No: **RB7530-GN**
 Liner: Jersey
 Coating: Latex crinkle full coated, gauntlet
 Color: Green
 Size: 10
 Length: 27cm, 30cm, 35cm
 Features: Durability, Anti-slip, Winter use
 Application: Manufacturing, Construction, Assembly, Wood industries, Heavy duty work



Cut level 1

Item No: **NM07603**
 Liner: 7 gauge polycotton
 Palm: Laminated rubber
 Color: White & Orange
 Size: 10
 Features: Durability, Dexterity, Anti-slip
 Application: Manufacturing, Construction, Assembly, Wood industries





Cut level 1



Item No: **US01202-S**
 Liner: Spray flocklined
 Coating: Latex
 Color: Yellow
 Size: 7, 8, 9, 10, 11
 Features: Water proof
 Application: Daily work, Household working

Cut level 1



Item No: **US01202-D**
 Liner: Dipping flocklined
 Coating: Latex
 Color: Pink
 Size: 7, 8, 9, 10, 11
 Features: Water proof
 Application: Daily work, Household working

Cut level B



Item No: **NM10909KV**
 Liner: 10 gauge Aramid Fibers
 Coating: Latex crinkle palm coated
 Color: Yellow & Blue
 Size: 7, 8, 9, 10, 11
 Features: Anti-cut, Anti-slip
 Application: Mechanic, Automotive assembly, Forest, Agriculture, Craft, Glass handling



Cut level B

Item No: **NM10909TKV**
 Liner: 10 gauge Aramid Fibers and steel wire
 Coating: Latex crinkle palm and thumb coted
 Color: Yellow & Blue
 Size: 7, 8, 9, 10, 11
 Features: Anti-cut, Anti-slip
 Application: Mechanic, Automotive assembly, Forest, Agriculture, Craft, Glass handling



Cut level C

Item No: **DY1350NM-H**
 Liner: 13 gauge nylon and glassfiber and HPPE
 Coating: Latex crinkle palm coated
 Color: Grey & Black
 Size: 7, 8, 9, 10, 11
 Norm: EN 420, EN 388: 4X43D, ANSI: 4
 Features: Anti-cut, Anti-slip
 Application: Mechanic, Automotive assembly, Forest, Agriculture, Craft, Glass handling, Handling sharp parts.



Cut level C



Item No: **DY1350NM-HB**
 Liner: 13 gauge nylon and glassfiber and HPPE
 Coating: Latex crinkle palm coated
 Color: Grey & Blue
 Size: 7, 8, 9, 10, 11
 Features: Anti-cut, Anti-slip
 Application: Mechanic, Automotive assembly, Forest, Agriculture, Craft, Glass handling, Handling sharp parts.



Cut level C



Item No: **DY1355NM-H**
 Liner: 13 gauge nylon and glassfiber and HPPE
 Coating: Latex crinkle half coated
 Color: Grey & Black
 Size: 7, 8, 9, 10, 11
 Features: Anti-cut, Anti-slip
 Application: Mechanic, Automotive assembly, Forest, Agriculture, Craft, Glass handling, Handling sharp parts.





Cut level 1

Item No: **PVC1560-R**
 Liner: Cotton interlock
 Coating: PVC full coated, knit wrist
 Color: Red
 Size: 9, 10
 Features: Durability, Liquid resistant, Anti-slip
 Application: Agriculture, Construction, Cold storage, Fishing, Warehousing



Cut level 1

Item No: **PVC7560-R**
 Liner: Cotton interlock
 Coating: PVC full coated, gauntlet
 Color: Red
 Size: 9, 10
 Length: 27cm, 30cm, 35cm, 40cm, 45cm
 Features: Durability, Liquid resistant, Anti-slip
 Application: Agriculture, Construction, Cold storage, Fishing, Warehousing



Cut level 1

Item No: **PVC1380-BR**
 Liner: Cotton
 Coating: PVC full coated, gauntlet
 Color: Blue
 Size: 8, 9, 10, 11
 Length: 26cm, 30cm, 34cm
 Features: Durability, Liquid resistant, Anti-slip
 Application: Agriculture, Construction, Cold storage, Fishing, Warehousing



Cut level 1

Item No: **PVC1380RR**
 Liner: Cotton
 Coating: PVC full coated, gauntlet
 Color: Dark red
 Size: 8, 9, 10, 11
 Length: 26cm, 30cm, 34cm
 Features: Durability, Liquid resistant, Anti-slip
 Application: Agriculture, Construction, Cold storage, Fishing, Warehousing



Cut level 1

Item No: **PVC1380RR-T**
 Liner: Terry cloth
 Coating: PVC full coated, gauntlet
 Color: Dark red
 Size: 8, 9, 10
 Length: 12"
 Features: Durability, Liquid resistant, Anti-slip, Winter use
 Application: Agriculture, Construction, Cold storage, Fishing, Warehousing



Cut level 1

Item No: **PVC1380BR-T**
 Liner: Terry cloth
 Coating: PVC full coated, gauntlet
 Color: Blue
 Size: 8, 9, 10
 Length: 12"
 Features: Durability, Liquid resistant, Anti-slip, Winter use
 Application: Agriculture, Construction, Cold storage, Fishing, Warehousing



Cut level 1

Item No: **PVC1380BR-LC**
 Liner: Cotton
 Coating: PVC full coated with extra long cuff
 Color: Blue
 Size: 7, 8, 9, 10
 Length: 26cm+35cm
 Features: Durability, Liquid resistant, Anti-slip, Winter use
 Application: Agriculture, Construction, Cold storage, Fishing, Warehousing



Cut level 1

Item No: **PVC1380BRKW-T**
 Liner: Cotton
 Coating: PVC full coated, knit wrist
 Color: Brown & Blue
 Size: 7, 8, 9, 10
 Length: 26cm+35cm
 Features: Durability, Liquid resistant, Anti-slip, Winter use
 Application: Agriculture, Construction, Cold storage, Fishing, Warehousing





Cut level 1

Item No: **PVC7560-Y**
 Liner: Cotton interlock
 Coating: PVC full coated, gauntlet
 Color: Yellow
 Size: 9, 10
 Length: 27cm, 30cm, 35cm
 Features: Durability, Liquid resistant, Anti-slip
 Application: Agriculture, Construction, Cold storage, Fishing, Warehousing



Cut level 1

Item No: **PVC7560-GN**
 Liner: Cotton interlock and jersey
 Coating: PVC full coated, gauntlet
 Color: Green
 Size: 9, 10
 Length: 27cm, 30cm, 35cm
 Features: Durability, Liquid resistant, Anti-slip
 Application: Agriculture, Construction, Cold storage, Fishing, Warehousing



Cut level 1

Item No: **PVC7560R-OR**
 Liner: Cotton interlock
 Coating: PVC full coated rough finish, gauntlet
 Color: Orange
 Size: 9, 10
 Length: 27cm, 30cm, 35cm
 Features: Durability, Liquid resistant, Anti-slip
 Application: Agriculture, Construction, Cold storage, Fishing, Warehousing



Cut level 1

Item No: **PVC1560HR-BLK**
 Liner: Cotton interlock
 Coating: PVC full coated heavy rough finish, knit wrist
 Color: Black
 Size: 9, 10
 Features: Durability, Liquid resistant, Anti-slip
 Application: Agriculture, Construction, Cold storage, Fishing, Warehousing



Cut level 1

Item No: **PVC7560HR-BLK**
 Liner: Cotton interlock
 Coating: PVC full coated heavy rough finish, gauntlet
 Color: Black
 Size: 9, 10
 Length: 27cm, 30cm, 35cm
 Features: Durability, Liquid resistant, Anti-slip
 Application: Agriculture, Construction, Cold storage, Fishing, Warehousing



Cut level 1

Item No: **SFP180**
 Liner: 3 layers (interlock, sponge, jersey)
 Coating: Fluorescent PVC full coated, knit wrist
 Color: Orange
 Size: 9, 10
 Features: Durability, Liquid resistant, Anti-slip
 Application: Agriculture, Construction, Cold storage, Warehousing



Cut level 1

Item No: **SFP480**
 Liner: 3 layers (interlock, sponge, jersey)
 Coating: Fluorescent PVC full coated, safety cuff
 Color: Orange
 Size: 9, 10
 Features: Durability, Liquid resistant, Anti-slip
 Application: Agriculture, Construction, Cold storage, Fishing, Warehousing



Cut level 1

Item No: **SFP790**
 Liner: 3 layers (interlock, sponge, jersey)
 Coating: Fluorescent PVC full coated, gauntlet
 Color: Orange
 Size: 9, 10
 Length: 12"
 Features: Durability, Liquid resistant, Anti-slip
 Application: Agriculture, Construction, Cold storage, Fishing, Warehousing





- ① SKN007 7 gauge natural polycotton string knitted gloves
 - ② SKB007 7 gauge bleached polycotton string knitted gloves
 - ③ SKGR007 7 gauge grey polycotton string knitted gloves
 - ④ SKB00701 7 gauge bleached polycotton string knitted gloves, one side with PVC dots
 - ⑤ SKB00702 7 gauge bleached polycotton string knitted gloves, both sides with PVC dots
- Size: S, M, L, XL, XXL



- ① SKBR007 7 gauge brown and bleached polycotton string knitted gloves
 - ② SKN0010 10 gauge natural polycotton string knitted gloves
 - ③ SKW01301 13 gauge white nylon knitted gloves, one side with PVC dots
 - ④ SKAR007 7 gauge Hi-Viz yellow nappy acrylic knitted gloves, reinforcement on crotch area
- Size: S, M, L, XL, XXL



- ① B5018C 100% Bleached cotton Interlock, three seams on back with mini PVC dots
 - ② JS35401 Brown jersey gloves, knit wrist
 - ③ JS35402 Brown jersey gloves with PVC dots, knit wrist
 - ④ JS35404 Zebra jersey gloves, knit wrist
- Size: S, M, L, XL, XXL

Earplugs



Glove clips



Demonstration bag

